

2025



ANGLING TRUST DIVISION 2 NATIONAL CHAMPIONSHIP

**River Great Ouse & Middle Level Drain
Saturday 27th September 2025**

General Information

Headquarters	Littleport Leisure Centre, Camel Road, Littleport, Cambridgeshire, CB6 1EW
Refreshments	Tea & Coffee available at the draw. Food & drinks available after the match (bar on site)
Section Draw	6:00pm Wednesday 24 th September - Angling Trust Competitions Facebook page – this will be emailed out to team captains and posted on our social media.
Draw	08:00am (Or after every team has registered)
Fishing	11:00am until 4:00pm (duration 5 hours)
Water Closure	Closed from 23:59, Sunday 21 st of September
Licences	All competitors must be in possession of a valid Environment Agency Fishing Licence. Any competitor reported by the Environment Agency to the resulting team on the day of the match will be disqualified.
Nets	Big weights are possible, and a minimum of 2 keepnets should be taken by every angler. <u>All nets must comply with National Environment Agency Byelaws.</u>
Local Rules	No Bloodworm & Joker
Eligible Fish	All fish coarse fish are eligible for weighing <u>except Pike & Zander</u> , which do not count. Game fish (salmonids, including grayling) do not count.

Table of Contents

Welcome.....	4
The Team.....	5
Procedures	6
For Competitors	6
For Stewards & Volunteers	6
Sections & Maps.....	7
Interactive Map	7
A Section – Denver Boats (Great Ouse).....	8
B Section – Wissey Mouth (Great Ouse).....	9
C Section – Modney Bridge (Great Ouse)	10
D Section – Queen Adelaide (Great Ouse)	11
E Section – Potter’s Bridge (Great Ouse).....	12
F & G Sections – Little Thetford (Great Ouse)	13
H Section – Peter’s Bridge (Middle Level)	14
J Section – Crooked Chimney (Middle Level)	15
K Section – Morton’s Bridge & Neeps Bridge (Middle Level)	16
Division 2 National Championship Rules 2025.....	17
Biosecurity for Competitors	22
What is biosecurity?	22
Why is biosecurity important?	22
How do I practice good biosecurity?	23
Practice Opportunities.....	24

Welcome

This year's Division 2 National Championships take place on two of the country's most famous waters – the Middle Level and Great Ouse.

Both waters are steeped in fishing history, being some of the first venues ever used for a National – the Middle Level almost 100 years ago in 1927 and the Great Ouse hosting its first National in 1933.

They were both mainstays in the match calendars for the largest competitions of the year for decades to follow. The last time the Ouse hosted the Division 2 was in 2013 when Leicester's Pete Marlow caught a superb 111lb of fish to win the day as Devizes AA claimed the team title and promotion to Division 1.

It has been a long time coming but we're proud to showcase these waters once again in 2025, and the support from the clubs – Kings Lynn AA, Ely Beet & Saffron Walden AC – along with the graft of local legend Ray Malle, has been immense.

I'd like to thank both clubs, Ray, and all the stewards who have stepped up to get the venues ready for action and who will be supporting our anglers on the big day – without you events of this scale are impossible.

So that leaves me with one final message, and that's a thank you to all the anglers who take part in the Nationals and wish you all the best for the 2025 Division 2 match – see you on the bank.

-Steve Fitzpatrick, Head of Competitions, Angling Trust



It's been far too long since the waters of the Fens have hosted a National, something that both ourselves at King's Lynn AA, the lads at Ely Beet AC and Saffron Walden AC have been desperate to change – so thank you to the Angling Trust for giving us the Division Two National this year. Hopefully, it'll be the first of many big matches to come on these fish-filled waters.

The National is quite late in the year but knowing the Middle Level and Great Ouse so well, we all feel that late-September is THE time to experience the best fishing that both venues have to offer. There will still be bream and skimmers, plus increasing numbers of roach and rudd, which means bites for all. I personally know that there's nothing worse than catching next to nothing in a National!

-Ray Malle, King's Lynn AA Match Secretary

The Team

Event Manager: Steve Fitzpatrick | steve.fitzpatrick@anglingtrust.net | 07944 984365

Lead Organiser: Ray Malle | 07843 860737

Head Photographer: Lloyd Rogers

Angling Trust Competitions Team:

Kelly Latimer | kelly.latimer@anglingtrust.net | 07984 173175
Richard Grange | Richard.grange@anglingtrust.net | 07938 802054
Alex Clegg | alex.clegg@anglingtrust.net | 07495 433613
James Lewis | james.lewis@anglingtrust.net | 07854 239725
Jonathan Hague | jonathan.hague@anglingtrust.net | 07956 800201

A big thank you and appreciation must go out to all our volunteers who give up their time to assist with our competitions. Without their help and continued support we would not be able to provide competitions on the scale that we do for our members.

If you would like to offer your assistance to act as a volunteer at any of our competitions, please contact Kelly Latimer, Angling Trust via email: Kelly.latimer@anglingtrust.net

Emergency Contact & Hospitals

In the event of an emergency, call 999 and notify a senior steward or member of the Angling Trust Competitions Team. You can identify locations to the emergency services using What3Words.

The closest Hospitals are:

- Doddington Hospital – Benwick Rd, Doddington, March PE15 0UG
- Princess of Wales Hospital – Lynn Road, Ely CB6 1DN



Division 2 National Champions 2024 | Wakefield Angling Club

Procedures

For Competitors

- Teams must submit a final 'team sheet' to competitons@anglingtrust.net by no later than 5pm on Friday the 8th of August. This should be filled in on the official AT document sent out to captains, with your 10 'fishing' anglers listed and up to 10 reserves, plus your nominated steward and their mobile number. You should retain this team sheet for your records. Anglers 1-7 will fish the Great Ouse and anglers 8-10 will fish the Middle Level.
- On Wednesday the 24th of September at 6:00pm, a live draw will take place for sections on the Angling Trust Competitions Facebook page. This draw will be conducted in 2 parts; with anglers 1-7 drawing their sections for the Great Ouse sections and anglers 8-10 drawing for Middle Level Sections.
- Before the draw on the morning of the match, at least one team member (captain or representative) must arrive to register their team's attendance and record any changes to the previously nominated team. Once all teams have registered, the draw will begin in the order of registration (teams will be called up to draw their peg set)
- At the draw, teams will select an envelope containing a 'peg set'. The envelope must be opened at the registration desk to allow the organisers to record which set you have drawn. Peg numbers will correspond to angler numbers on your team sheet to determine who fishes where – e.g Angler 1 on your team sheet is John Smith. Angler 1 on your peg set has drawn D9. Therefore John Smith fishes D9.

For Stewards & Volunteers

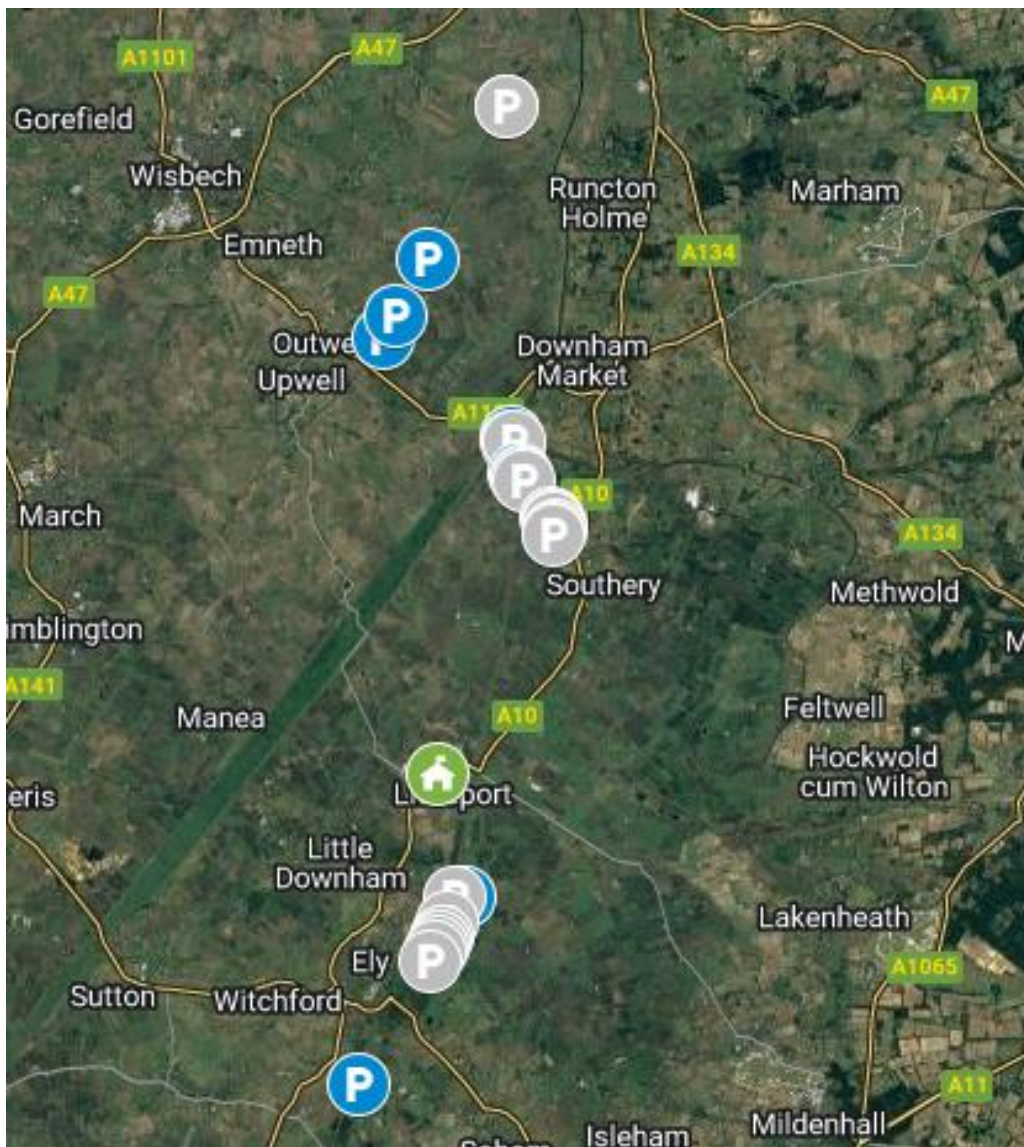
- All teams are required to bring at least one steward to assist with the weigh in.
- We understand that some stewards will have a preference for which section they are allocated to. Please notify us of any preferences as soon as possible.
- The exact duties of local and team-supplied stewards will be determined after the section draw on Wednesday the 24th of September. This is to allow the organisers to coordinate travel arrangements – e.g if a team's nominated steward is travelling with a particular competitor.
- All relevant information for stewards will be communicated via a WhatsApp group, which will be set up after the section draw has taken place. If you (as a steward or volunteer) can't use WhatsApp for any reason, please contact Alex Clegg on 07495 433613 or via alex.clegg@anglingtrust.net and other arrangements for communication will be made.

Sections & Maps

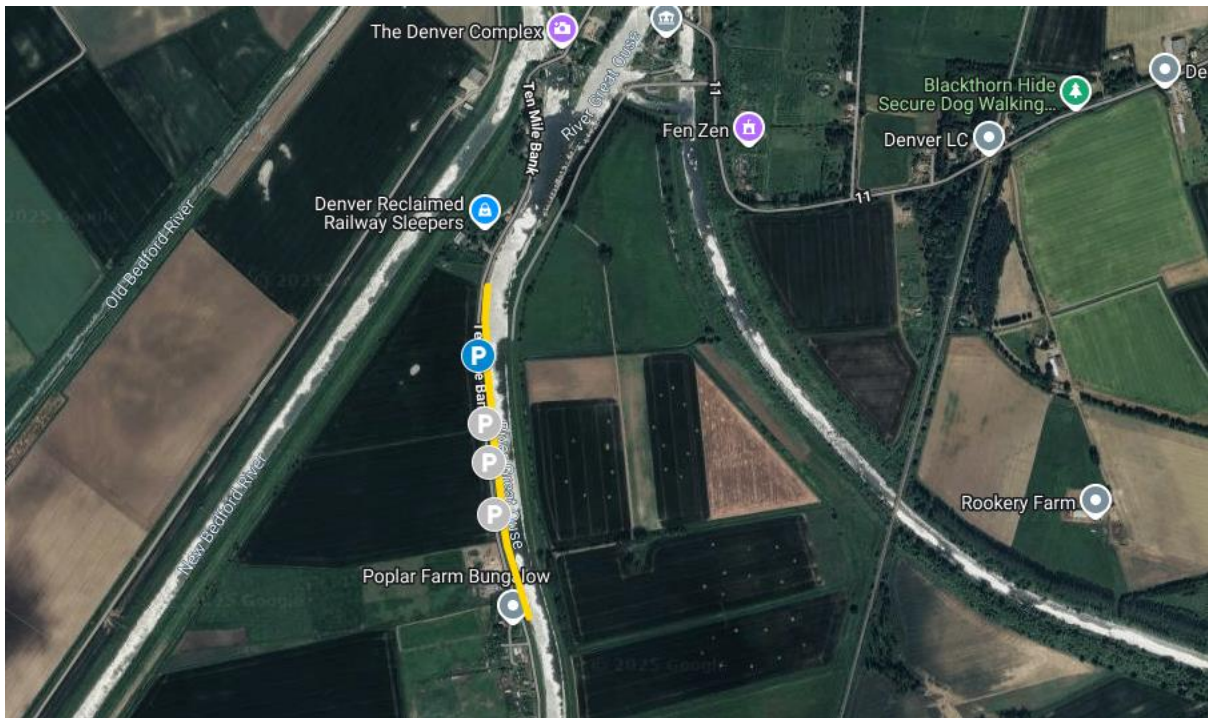
The following pages contain a guide to access on the stretches of canal being used in the 2025 Division 2 National Championships. Please note that anglers should always park sensibly, avoiding disruption to residents at all times. All the parking listed below is advisory and to be used at your own risk.

To complement the guide below, an interactive map is also available. This is zoomable and can be saved to your phone. [N.B – blue icons denote main parking areas with instructions, postcodes and W3W locations. Grey denotes additional parking e.g laybys]

[CLICK HERE FOR INTERACTIVE MAP](#)



A Section – Denver Boats (Great Ouse)



Nearest Postcode: PE38 0EQ

What3Words: ///folks.impulsive.nods

Pegs run from Denver Reclaimed Railway Sleepers (peg 1) to Poplar Farm Bungalow (peg 30). Park sensibly using laybys or off road on the grass behind the pegs.

B Section – Wissey Mouth (Great Ouse)

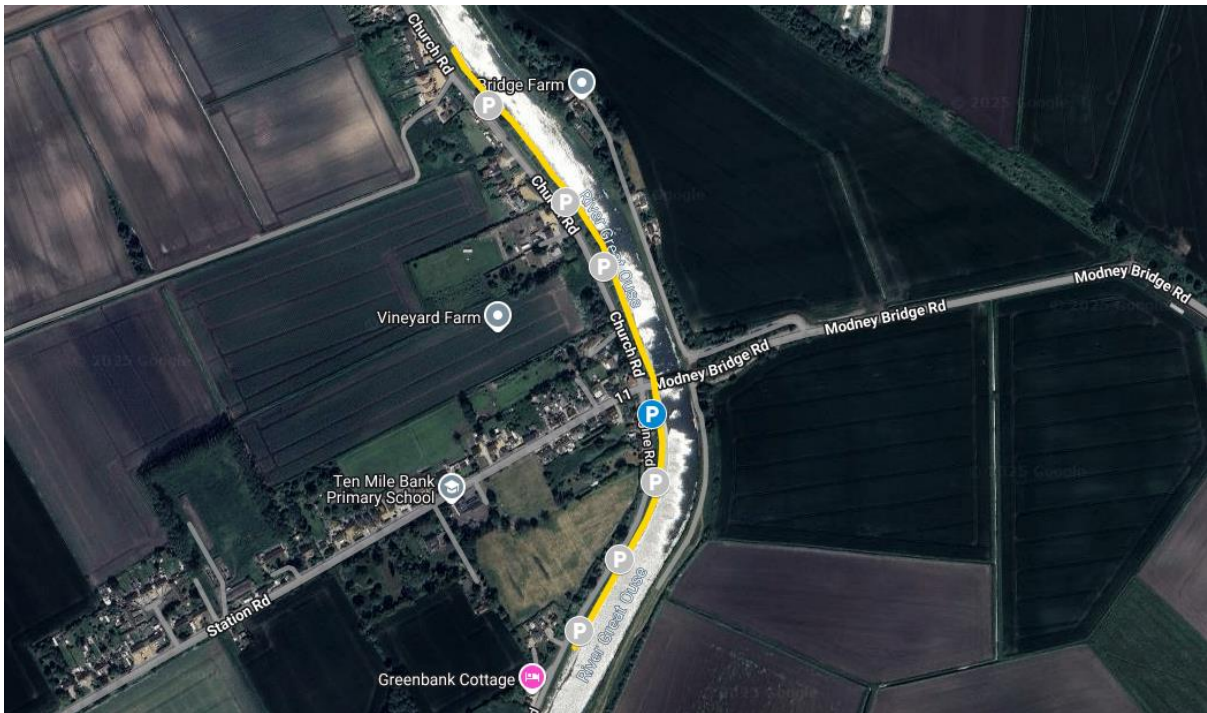


Nearest Postcode: PE38 0EH

What3Words: [///clutches.swim.slot](https://www.what3words.com/#!/clutches.swim.slot)

Peg 1 will be two pegs before the Wissey Mouth, peg 30 finishing just before the railway bridge. Park sensibly using laybys or off road on the grass behind the pegs.

C Section – Modney Bridge (Great Ouse)

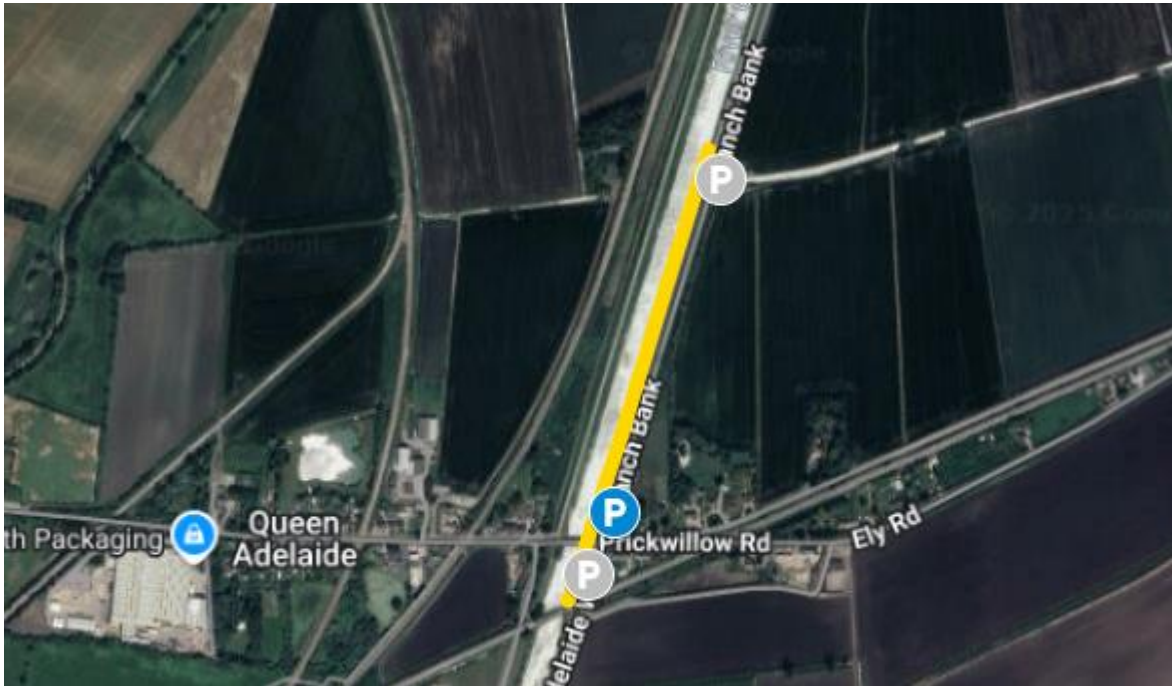


Nearest Postcode: PE38 0EP

What3Words: ///spurring.exams.ounce

There will be 15 pegs either side of the bridge. Peg 1 will be on the Denver side of the bridge, peg 30 on the other side. Park sensibly using laybys or off road on the grass behind the pegs.

D Section – Queen Adelaide (Great Ouse)



Nearest Postcode: CB7 4QU

What3Words: ///replaying.removals.foiled

Peg 1 will be next to the road bridge in Queen Adelaide village running towards Littleport for 30 pegs
There is parking in the large layby and on the grass on the left immediately as you turn off Prickwillow Road onto Branch Bank. There is also off-road parking at the far end of the section in front of the pumping station. Please park sensibly and considerately as Branch Bank is a busy road. Where possible, please try and share cars/vans to reduce the number of parking spaces needed.

E Section – Potter’s Bridge (Great Ouse)



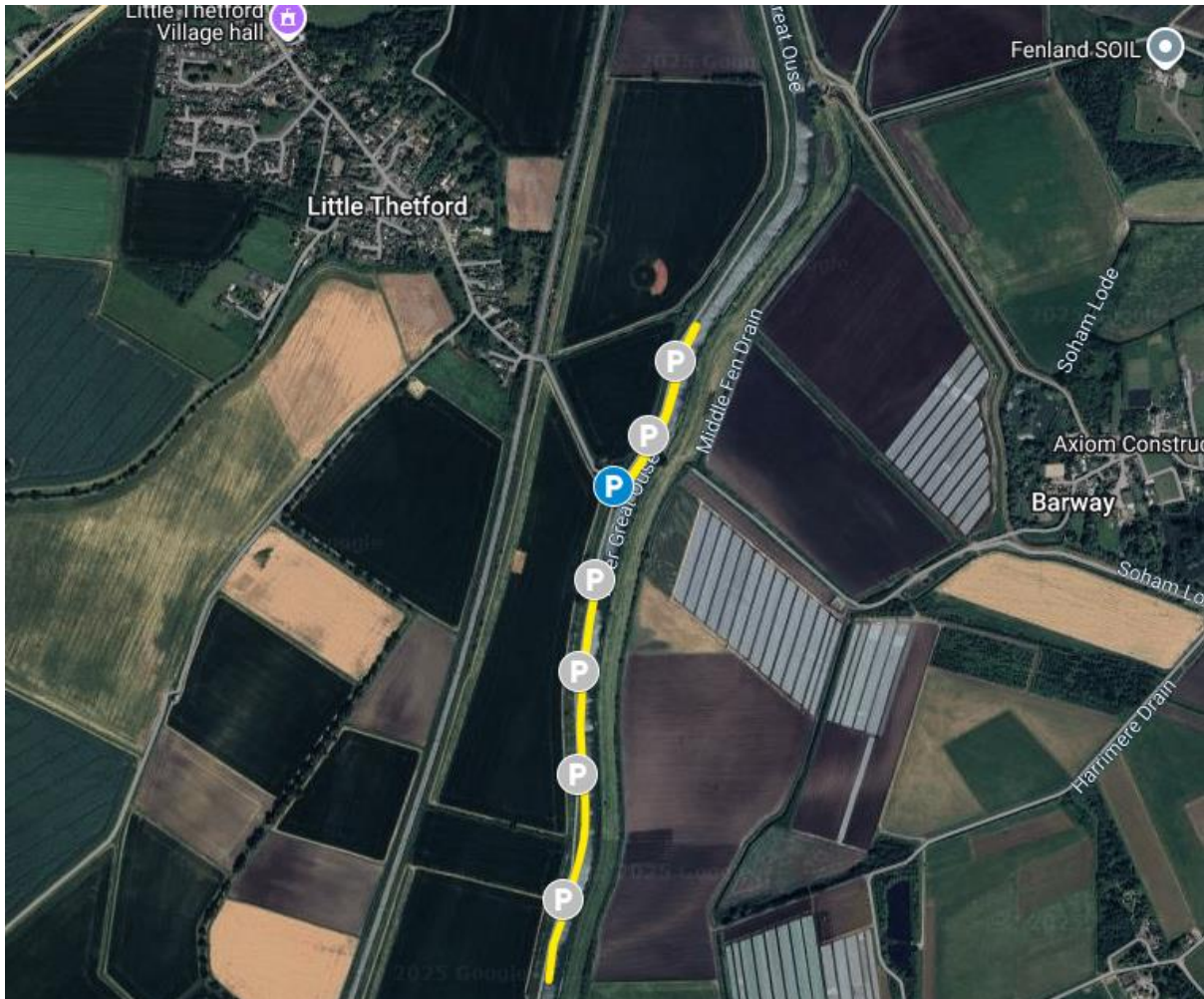
Nearest Postcode: CB7 4UB

What3Words: ///loaders.connected.apartment

Peg 1 will start at Potters Bridge (the footbridge leading to Roswell Pits), peg 30 finishing just before the railway bridge outside Queen Adelaide village.

Parking is available off road on the Queen Adelaide Way along the whole length in laybys and grass banks/verges – please park sensibly though. Parking will not be behind every peg so some walking along the top of the riverbank will be required. Please park sensibly and considerately as Queen Adelaide Way is a busy road. Where possible, please try and share cars/vans to reduce the number of parking spaces needed.

F & G Sections – Little Thetford (Great Ouse)

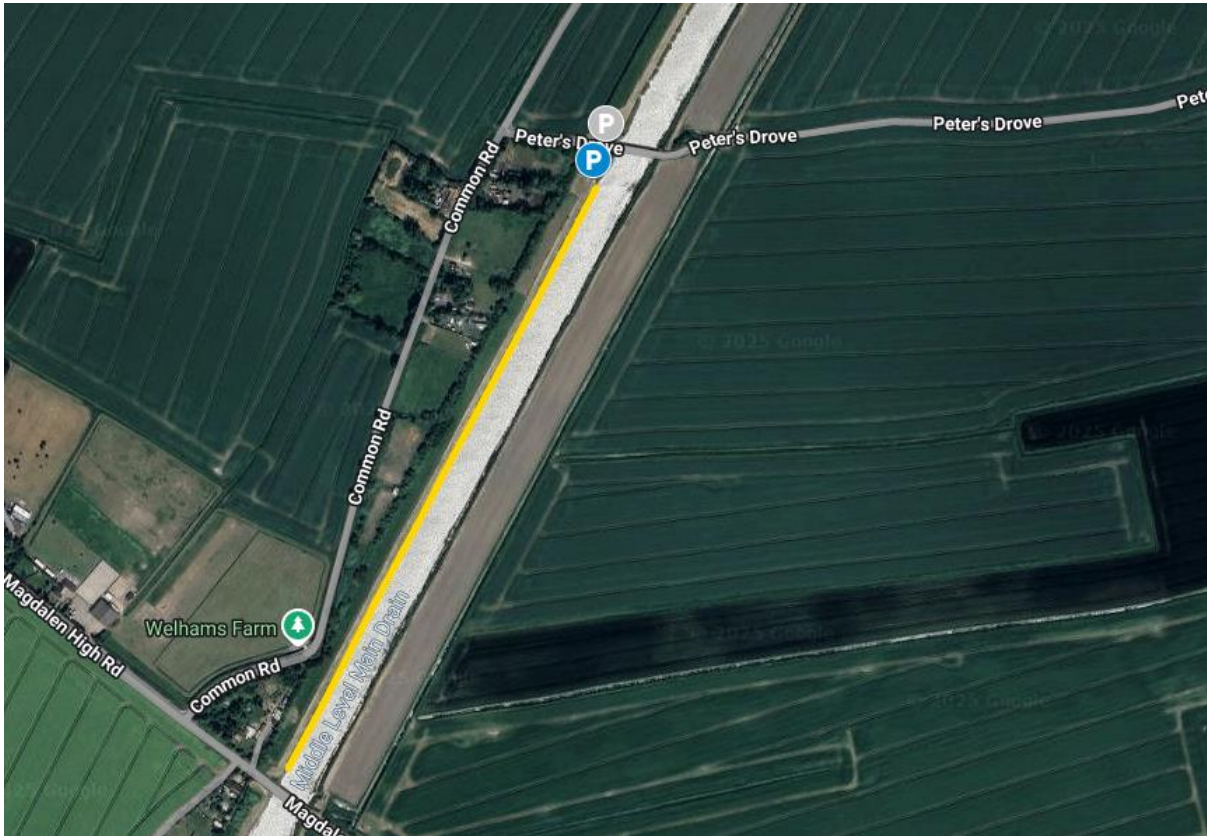


What3Words: ///parading.mostly.ridge

Nearest Postcode: CB6 3HZ

Follow Holt Fen down to the river taking great care at the railway crossing. Parking is in the main area (in blue) or behind every peg down the track, weather permitting. F section can be found either side of the boat mooring, with G section upstream (to the right when facing the river).

H Section – Peter’s Bridge (Middle Level)

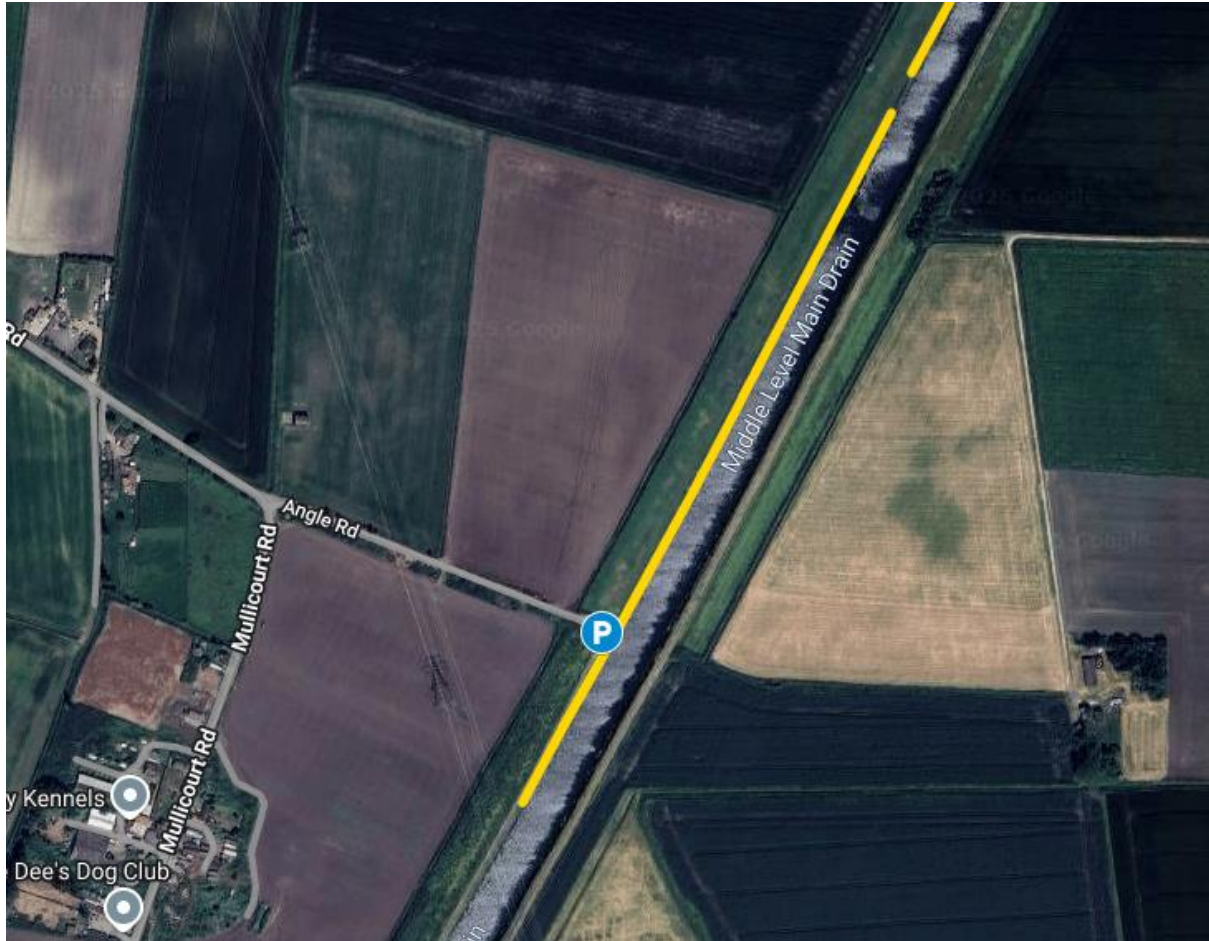


Nearest Postcode: PE34 3EW

What3Words: ///relishing.hopping.expect

Pegs will run between Peter's Bridge and Magdalen High Road Bridge. Peg 1 will be closest to Magdalen High Road Bridge. Parking will be on both sides of Peter's Bridge on top of the bank.

J Section – Crooked Chimney (Middle Level)



Nearest Postcode: PE14 8PX

What3Words: ///snuggle.played.deranged

Pegs 1 – 22 will be to the left of the parking area heading towards Morton's Bridge. Pegs 23 – 30 will be to the right heading towards the wires.

Parking is on and at the bottom of Angle Road for pegs 1 - 15, pegs 16 – 30 can park in the car park at Morton's Bridge – this is the next bridge up from Angle Lane (postcode PE14 8JQ)

K Section – Morton’s Bridge & Neeps Bridge (Middle Level)



Morton's Bridge (K1-15)

Nearest Postcode: PE14 8QN

What3Words: [///classics.troll.regress](https://www.what3words.com/#!/classics.troll.regress)

Pegs 1 – 15 will be at Crooked Chimney on the end of J section pegs 16 - 30. Use the Morton’s Bridge car park here (postcode PE14 8JQ)

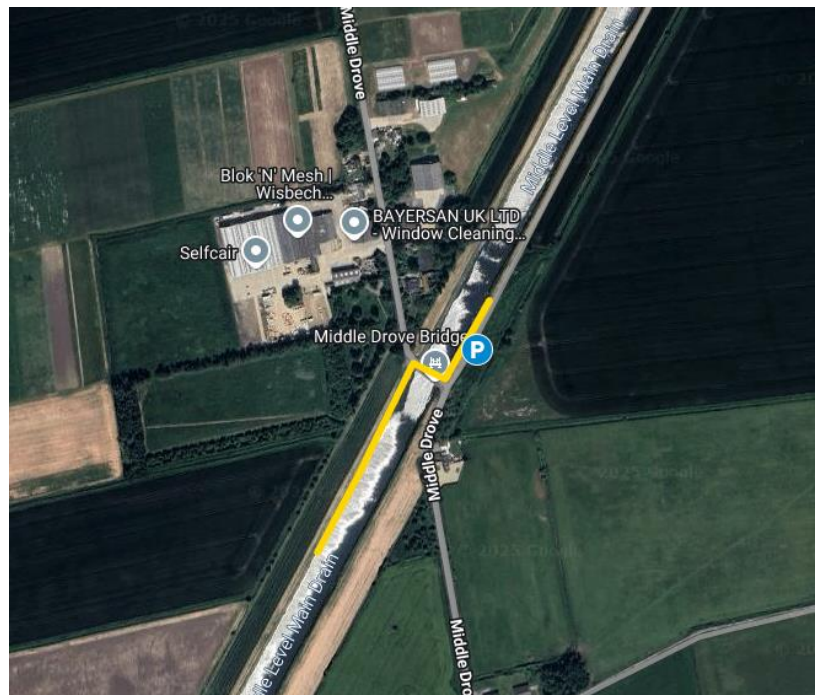
Neeps Bridge (K16-30)

Nearest Postcode: PE14 8JT

What3Words:

[///monitors.premature.slurs](https://www.what3words.com/#!/monitors.premature.slurs)

Pegs at Neeps Bridge (situated on Middle Drove) will be on both banks – provisionally pegs 16 - 25 on one bank and 26 – 30 on the other. Parking is on the bank in the car park that can be accessed by crossing the bridge from the Bayersan Window Cleaning office side and then turning immediately left.



Division 2 National Championship Rules 2025

1. The Angling Trust (AT) will organise National Championships each year. The AT Coarse Management Group will be responsible for supervising the arrangements.
2. The number of teams in the 1st Division will be limited to 50 and the remaining Clubs and Associations in the AT eligible to compete shall be formed into the 2nd Division, with entries capped at the AT's discretion.
3. Promotions and Relegation's will operate on a 10 – up 10 – down basis, assuming a FULL ENTRY OF 50 TEAMS IN EACH DIVISION. Should there be less than 50 Teams in any Division the number of Teams relegated will be varied downwards. Any team not competing in its designated National Championships will normally be relegated ONLY one Division although this may vary with exceptional circumstances.
4. The Sections to be used in each National Championship will be closed for fishing to all competitors in that Championship from midnight on the Sunday prior to the National Championship.
5. The National Championships will be “pegged down” competitions, pegs to be preferably 20 yards (18 metres) apart, or more where practicable. And must be a minimum of 30m from overhead power cables.
6. Member Clubs and Associations are entitled to enter more than one team consisting of 10 anglers in the Divisional National Championships. Member Clubs and Associations shall not be entitled to compete with Teams consisting of fewer anglers than those referred to in this Rule unless prior written consent has been obtained.
7. In order to qualify to compete in the National Championships a Member Association/Club must have paid its subscription for the current year by the due date. All competitors taking part must be Individual Members of the AT.

The Team Entry Form comprising up to 20 names plus the any pools in respect of the first ten names on the Entry Form **ONLY** must be received at Angling Trust Competitions Office **by the deadline stated on the team sheet** prior to a club's respective National Championship. Failure to comply with this date will mean the Team being refused entry to the Championship.

8. No person may compete in more than one Divisional Championship in the same year.
9. No person will be allowed to compete in the event if they are **under the age of 16 on the day of the Championships** unless they have a been issued with an Angling Trust Young Angler Exemption which is valid at the time of the Championship.
10. Organising clubs will provide Senior Stewards who will help to co-ordinate the weigh stewards provided by the clubs.

11. Each club/association will provide a section steward for the event to work alongside the hosting venue's Senior Stewards for weighing in and recording.
12. Stewards will do their utmost to prevent spectators approaching or interfering with the competitors. However, a maximum of 4 Bank Runners per Team is allowed and will be clearly identifiable. They may pass information to their own team members only.
13. ALL Team Captains shall report to the Team Registration Steward prior to the draw whether or not they have any changes to make. The number of changes a Captain can make at this time will be restricted to two anglers from the reserves listed on the Team Entry Form. Where any such change is made, the incoming angler MUST fish the drawn Section and peg of the angler they are replacing.
14. A Team representative will draw a peg set on the day of the Qualifier. Team members MUST fish the Section/Peg shown in the peg set as drawn for them.
15. No competitor will change their peg or section. Any angler who commences fishing at the wrong peg will be disqualified.
16. Competitors must plan to use private transport in every case to transfer from HQ to their section and return.
17. Any angler may bring a caddy to help carry their tackle to their peg. Once at the peg no further assistance will be allowed.
18. No competitor will have live or dead fish in their possession before the Championship.
19. The signal to commence and cease fishing will be given by the Senior Section Steward in each Section.
20. The duration of the Championship will be 5 hours.
21. Before the starting signal no competitor must on any account ground bait or loose feed the swim but will be allowed to:
 - Wet a line
 - Plumb the depth
 - Test the float
 - Mix or wet ground bait
 - Clear their fishing ground of weed or obstructions
 - Position their equipment

You cannot:

 - Cast a feeder – a bomb must be used
 - Ship out any form of pot (pole-mounted or cupping kit) over the water
22. A competitor may wade provided that the water does not extend above the knees, unless they can touch the bank, in which case the water can extend above the knees. The same principles apply to platforms and knee depth is to be taken at the front of the platform. No box legs may extend beyond the front of the platform.

23. Every competitor must fish from within one metre either side of their designated peg. On flowing water, the angler will fish from their position in the direction of the flow as far as the next peg. On still waters they may fish as far as half the distance between their peg and the pegs on either side. Where competitors are drawn on opposite banks the limit of the swim will be the middle line between either bank. The competitor will restrict their activities completely to these boundaries, neither their person, tackle, bait, ground bait or hooked fish may intrude into their neighbour's swim.
24. In an extreme situation e.g., snagged tackle or a snagged fish, an angler must seek permission from their neighbour(s) before moving from their designated peg to try and remedy the situation.
25. No competitor may leave their peg during the Qualifier other than to go to the toilet. However, in the event of an emergency and/or severe weather conditions, a competitor may leave their peg but only with the express permission of the Senior Section Steward. In such circumstances the Senior Steward may decide in the best interests of the competitors that fishing should be suspended. In the worst-case fishing may be terminated by the Senior Steward upon instruction from the Angling Trust Competitions Team and event organiser.
26. A competitor must not cause annoyance or to seek to interfere with another competitor during the Championship. They must always act in a sporting manner.
27. A competitor shall have in use, one rod or pole, one line and single hook at one time, but may have other poles or rods and tackle assembled behind them where possible, providing that tackle is not baited.
28. Any bait, subject to the local rules appertaining at the time of acceptance as a National Championship venue, may be used during the National Championships, except live or dead fish, spinning baits and artificial lures.
29. Maximum length of poles permitted is 16 metres, floating poles are not allowed.
30. Braid hook lengths are not permitted.
31. Surface Floating baits either hook or feed are not permitted.
32. Lead shot is banned above a size 8 (0.06g).
33. The use of electronic fish finders is forbidden.
34. No competitor shall present their baited hooks into their swim by any means other than the pole or rod to which the line is attached.
35. All feed may be thrown in by hand, or by the use of one- or two-handed catapults, throwing sticks, swim feeders, bait droppers, bait cups and bait shuttles, but no other mechanical means of projecting feed is allowed. No bait shall be introduced with a pole or bait dropper attached to an extra pole or rod whilst continuing to fish. Spodding is not permitted.
36. Competitors must strike, play and land their own fish from the confines of their own peg (see Rule 23). Hand lining fish is not permitted.

37. Competitors must retain all fish in a keepnet that complies with the relevant Environment Agency byelaws (<https://www.gov.uk/guidance/national-rod-fishing-byelaws-for-england-freshwater-fishing-with-a-rod-and-line>).
38. All keepnets must be laid out on the bank before the start. Keepnets will only be allowed to be put into the water 15 minutes before the all-in.
39. A minimum of 2 keepnets must be taken by every angler as big weights are possible. It is not a requirement that both are used from the start, but we ask that anglers are sensible and deploy the extra net if reasonably needed. Competitors must lay BOTH keepnets out on the bank before the start, as per rule 38.
40. All fish caught are eligible for weighing except Game Fish (salmonids, including grayling) Pike & Zander. Crustaceans (e.g crayfish) are not fish and do not count.
41. Competitors must, if practicable, keep all fish caught alive. If for any reason competitors cannot keep fish alive the Stewards shall have the power to weigh in during the Championship and return the fish alive to the water.
42. Competitors must cease fishing at the signal. Should a competitor still be playing a fish hooked before the signal is given, they will be permitted no more than 15 minutes after time has been called to land the fish.
43. All competitors will remain at their pegs until details of their catch have been recorded by the Steward, except for the purpose of clearing litter from their swims or as defined in Rule 25.
44. Competitors are responsible for ensuring their pegs are clear of litter and no competitor shall have their catch weighed in who has litter on the banks of their swim.
45. Both the competitor and steward(s) must ensure that the correct procedure is used for transferring fish from a keepnet to a weigh net. They MUST utilise either,
 - a. pulling a lower ring through and pouring fish into the weighing net or
 - b. swimming them up the keepnet and pouring.
46. The individual weight of each competitor will be recorded to the lowest possible denomination on the scales provided in Kilograms.
47. After each competitor has been weighed in at their peg and signed for, all fish must be carefully and considerately returned to the water.
48. Competitors must, if practicable, keep all fish caught alive. If for any reason competitors cannot keep fish alive the Stewards shall have the power to weigh in during the competition and return the fish alive to the water.
49. Any dead fish should be weighed and recorded separately; the steward will clearly mark this on the weigh sheet. The decision as to whether the dead fish will be added to the weight of the anglers catch will be at the discretion of the AT Competitions Team.
50. The result of the team competition shall be determined on a penalty points system. The top weight in each section shall receive 1 point, the second highest weight one point more etc. In

the event of anglers failing to catch a fish, together with absent or disqualified anglers, they shall receive maximum points.

51. In the event of more than one competitor recording the same weight in the same section, those competitors will receive equal points. For example, if two anglers were to tie in fifth place, they would both receive five section points. The angler with next lower weight will be awarded seven section points.
52. In the event of more than one team having the same total points, their final positions will be decided by total weight.
53. All competitors must conform to Environment Agency byelaws. Any competitor reported to the Event Management Team by the Environment Agency for being unable to produce a valid license shall be deemed to be in contravention of the Rules and shall be disqualified. All pools, entry fees etc. in respect of the said competitor shall be forfeited.
54. Any Challenge must be made in writing and lodged with a member of the AT Competitions Team or Senior Section Steward no later than one hour after the end of the match and before the results are published. Irregularities which are brought to notice at a later date may be dealt with only by and at the discretion of the AT Competitions Team.
55. If in the opinion of the AT Competitions Team, any Team or Individual is in breach of these rules or is guilty of behaviour which is contrary to the best interests of the sport, or upon complaint being received by the AT Competitions Team that there has been an alleged breach of the rules, the AT Competitions Team shall make a decision on all available facts and that decision will be final and binding.
56. Any team or competitor proved to be in contravention of these rules will be disqualified.

Biosecurity for Competitors

Please help prevent the spread of invasive non-native species (INNS), diseases & parasites by practicing good biosecurity in the build up to this year's National. All anglers should follow the mantra of *Check, Clean, Dry* after every match or practice session.

What is biosecurity?

Biosecurity is about the measures we take to prevent the spread of unwanted plants, animals and diseases between waters. The things we could potentially transfer are wide ranging, but some common examples you might be familiar with include:

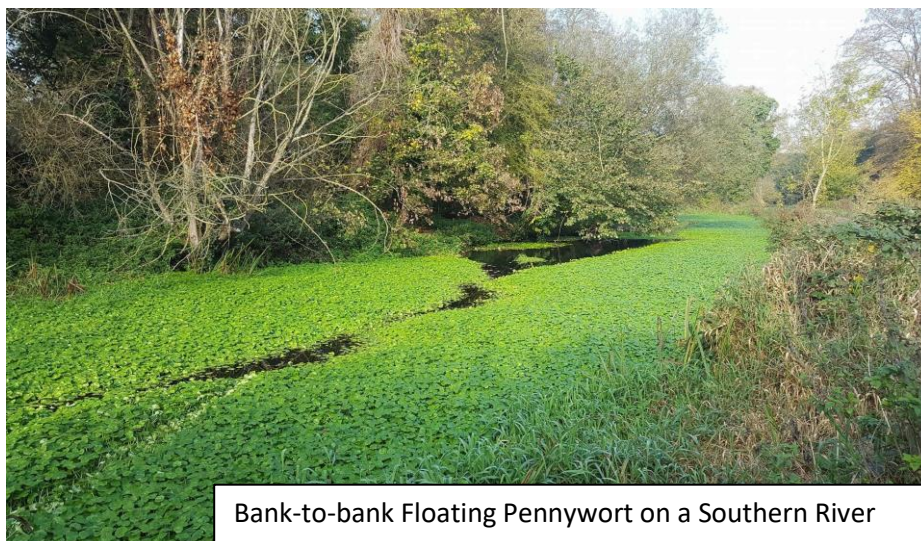
- [Koi herpesvirus \(KHV\) – viral disease](#)
- [Floating Pennywort – invasive aquatic plant](#)
- [Signal Crayfish – invasive aquatic animal](#)
- [Himalayan Balsam – invasive terrestrial plant](#)

Why is biosecurity important?

Invasive non-native species, diseases & parasites affect **your** fishing.

Match venues can be devastated by the arrival of invasive species or disease; whether it's a viral outbreak that kills fish, or plant growth that makes a stretch of water unfishable.

Invasive non-native species *are present* in and around the Great Ouse & Middle Level Drain, which are currently being managed. Please respect our host clubs and your own waters by following the guidance on the next page.



Bank-to-bank Floating Pennywort on a Southern River

How do I practice good biosecurity?

Biosecurity is simple when carried out by following Check, Clean, Dry. You should pay particular attention to:

- Keepnets & landing nets – which should be clean and completely dry before they are submerged. (Note rule 38 RE keepnets)
- Stink bags – which should arrive at a venue dry. You should not under any circumstances bring your nets to a new venue in a wet/ damp stink bag which hasn't been dried or cleaned.
- Footwear – invasive terrestrial plants such as Himalayan Balsam can be easily spread by their seeds, which could be carried in the mud on your boots.

STOP THE SPREAD

Invasive plants and animals can carry diseases that kill fish, and block waterways and banks interfering with fishing. They can be small and hard to spot so are easily spread on damp equipment and clothing.

Protect the environment and fishing you enjoy by keeping your kit free of invasive plants and animals.

Remember to check these places

CHECK Check your gear after leaving the water for mud, aquatic animals or plant material. Remove anything you find and leave it at the site.

CLEAN Clean everything thoroughly as soon as you can, paying attention to nets, waders, and areas that are damp and hard to access. Use hot water if possible.

DRY Dry everything for as long as possible before using elsewhere as some invasive plants and animals can survive for two weeks in damp conditions.

Watch out for

QUAGGA MUSSEL KILLER SHRIMP FISH DISEASE FLOATING PENNYWORT

Funded by the Aquatic Biosecurity Partnership:

Department for Environment, Food & Rural Affairs Net Zero Scotland Scottish Government Aquatic Biosecurity Partnership NNSS ANGLING TRUST

Find out more about invasive plants and animals and how you can help to stop the spread at: nonnativespecies.org/checkcleandry

Team captains should ensure that all squad members are briefed on the above.

For further guidance on biosecurity, visit:

[The GB Non Native Species Secretariat Website – Biosecurity for anglers](#)
[The Angling Trust Invasive Non Native Species Homepage](#)

Or contact Ian Doyle via ian.doyle@anglingtrust.net or on 07951037091

Practice Opportunities

Day Tickets & Lineups

Day tickets are available at £5 on the bank for sections controlled by Kings Lynn Angling Association (A, B, C, H, J & K). To book pegs for a lineup, contact Ray Malle on 07843 860737.

Day tickets are also available for £5 on the bank at Little Thetford (F & G) through Saffron Walden Angling Club. [To enquire about block bookings, contact the club via their Facebook page here.](#)

Practice on Ely Beet sections (D & E) is by prior arrangement only. Contact Michael Tennyson on 07467 339912 for details.

Matches

- Wednesday 18th of June onwards: Any method evening matches every fortnight at Neeps Bridge. Book in with Ray Malle.
- Sunday 7th of September: Feeder only open across Middle Level & Great Ouse. Book in with Ray Malle.
- Sunday 21st of September: Any method open across all National sections. Book in with Ray Malle.
- King of the Fens: series held on the Middle Level Drain across four rounds. Anglers can fish as individuals or as part of a 3-person team. Book in with John Bates or Caroline Burton on 07709 282965 or via the Sensas Mark One Facebook page.
 - Sunday June 22nd – North Level Drain
 - Sunday June 29th – North Level Drain
 - Sunday July 6th – Middle Level Drain
 - Sunday August 24th – Middle Level Drain



Angling Trust
The Old Police Station
Wharnccliffe Road
Ilkeston
Derbyshire
DE7 5GF

Email: kelly.latimer@anglingtrust.net
Tel: 0115 822 4532



**ANGLING
TRUST**

The Angling Trust believes in clean sport and supports the anti-doping policies and anti-doping rules of WADA, UKAD and the International Angling Confederation (CIPS) to ensure the integrity of our sport is protected. For further information, see our website.