

A toolkit for clean ups

Guide covering everything you need to carry out your own
litter pick



Table of Contents

03 Litter - the issue

The issue of litter on freshwater and marine fish and habitats

04 Why should you organise a litter picker?

The benefits of litter picking

05 How to set up an angling clean up

A checklist of key considerations when a club or fishery are looking to organise an event

06 Equipment checklist

Preparing for a clean up

07 During the clean up

What to do on the day

08 After the clean up

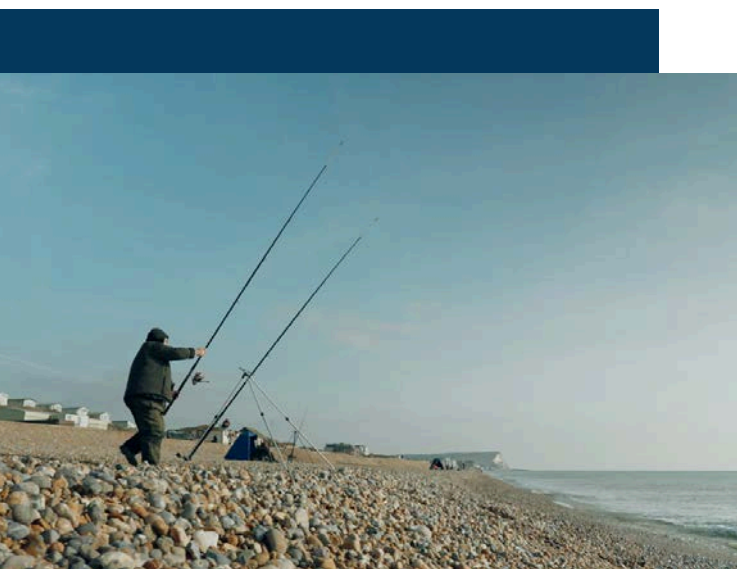
Think about what you found, and share your data and photos to promote further action

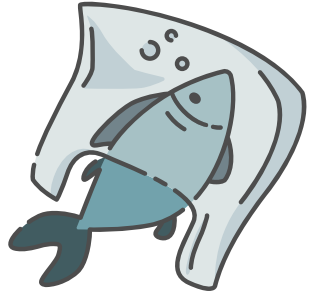
09 Beyond the clean up

Other things you can do to make a difference

10 Templates

- Participant sign-in form
- Risk assessment
- Press release form





Litter - the issue

Litter includes anything from crisp packets, cigarette butts through to discarded barbeques and plastic bags

Once present in the freshwater and marine environment, plastic can cause damage to wildlife, leach chemicals into the water as well as being an eye sore.

Many litter items are made from plastic. Plastic is a cheap and versatile product but also takes hundreds of years to break down.

For some forms of plastic, it may not break down completely, rather degrade into smaller particles.

These microplastics can then be mistaken for food and consumed by fish and other wildlife and enter the food chain.



Why organise a litter pick

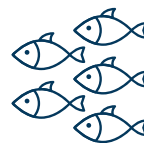


Together, we can make a huge difference in reducing the amount of litter present in our waterways and help to protect fish and the environment from harm.

We care about our environment, and through our action we can:



Encourage others to do the same and to clean up after themselves



Protect wildlife and our native fish



Reverse the tide on litter pollution



Improve our social health

How to set up a litter event?

Before you start your clean up event, here is a checklist of things to do:

- | | TICK |
|--|--------------------------|
| 1. Appoint a leader to coordinate the event | <input type="checkbox"/> |
| 2. Decide on a time, location and meeting point | <input type="checkbox"/> |
| 3. Check whether you need any permissions to undertake the litter event (landowner, or if in protected environmental area may need extra permissions) | <input type="checkbox"/> |
| 4. Arrange for the litter to be collected <ul style="list-style-type: none">• Contact your relevant local authority who will be able to assist you in organising a collection point.• If you are based in the south-east ReAP UK may be able to assist in collecting plastics from your event.• Alternatively, identify a volunteer that is willing to take collected waste and recyclables to a local recycling centre | <input type="checkbox"/> |
| 5. Check whether there are an invasive non-native species <ul style="list-style-type: none">• Check for species on invasive species mapper• Follow Check, Clean, Dry practices to clean and dry boots and equipment that have come into contact with water during the event | <input type="checkbox"/> |
| 6. Do you have all the equipment you need? <ul style="list-style-type: none">• See the checklist on page X• The Angling Trust may be able to assist in free pickers and bibs | <input type="checkbox"/> |
| 7. Carry out a risk assessment <ul style="list-style-type: none">• A template risk assessment that could be used as a starting point is available on page X | <input type="checkbox"/> |
| 8. Do you have the appropriate insurance? <ul style="list-style-type: none">• Angling Trust affiliated fisheries and clubs are insured to undertake litter picks as part of the management of their waters | <input type="checkbox"/> |
| 9. Ensure you have the appropriate safeguarding policies in place for your event <ul style="list-style-type: none">• The Angling Trust provide advice on safeguarding | <input type="checkbox"/> |

Equipment checklist

The equipment you will need will depend on the size and type of litter picking event you organise. Some useful items are listed below. This is just a guide and is not an exhaustive list.



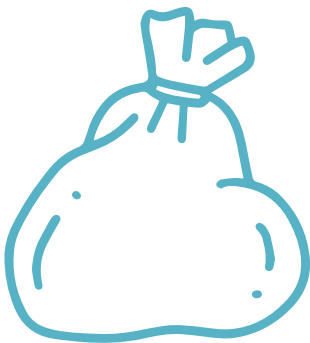
Litter pickers



Protective gloves



High visibility vest



Bin bags



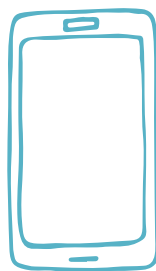
First aid kit



Hand sanitiser



Container for sharp's



Charged mobile phone



Food and drink

If you are need of any litter pickers or high visibility vests then please contact AAL@anglingtrust.net as we may have some available through [#anglersagainstlitter](https://twitter.com/anglersagainstlitter)

During the clean up

Participant sign in

It is important that you check in and out all the volunteers and obtain their consent for any photographs that might be taken

Brief participants before starting the event

Before the start of the clean-up undertake a briefing to let the participants know what they are doing, the risks involved and how to keep themselves safe.

Clean up briefing

- Introduce yourself and any other leaders at the event. Share a contact mobile number should a participant need to get hold of you during the clean-up.
- Use the risk assessment to brief participants on health and safety.
- Delegate tasks where appropriate – if you are looking to recycle certain items, then this could include certain volunteers having roles to collect recyclables only to save sorting at the end
- Ensure participants are suitably equipped and ask them to remain in sight of at least one other participant.
- Provide participants with a scheduled meeting time and location for the end of the event



After the clean up

- Count the number of bags of rubbish you have collected
- Chat amongst yourselves about what you found. What were the most unusual and common items you came across?
- Take a photo of your efforts.
- Place the bags in the designated pick up point ready for collection by the council.
- Submit your event to the Angling Trust litter survey via Epicollect.
<https://five.epicollect.net/project/anglers-against-litter-survey>

This will help us to keep a track on how much rubbish the angling community are collectively removing from the environment, and give valuable evidence to inform ongoing advocacy in this area.

- Post your findings on social media using the #anglersagainstlitter hashtag and send to your local press (page 16) with a photo of the clean up



Lastly a huge thank-you!

Events like these make such a difference to protecting the environment and fish from harm.

Beyond the clean up

As well as taking part in clean up events, your fishery and club can make a difference by adopting further practices to reduce plastic waste. This will set a positive example for others to follow:

1. Recycle your old fishing line and spools through the Anglers National Line Recycling Point (ANLRS).

2. Take 5 – after you have finished fishing for the day, spend 5 minutes picking up litter along the beach or bank.

With 1-2million anglers in the UK, if every angler picked up five pieces of litter once a year that would remove an incredible 5-20 million pieces of litter from the environment

3. Pledge your support to the Angling Trust 'Anglers Against Litter' campaign.

4. Report lost line or terminal tackle

Sometimes line gets snagged and lost, but it is important to report these to club bailiffs or the fishery owner for removal, if you cannot recover it safely yourself.

5. Recycle your plastic packaging



Participant sign in form

| | | | |
|-----------------------------------|--|----------------------------------|--|
| DATE | | | |
| LOCATION OF LITTER PICK | | | |
| ORGANISERS NAME (CLUB/FISHERY) | | | |
| LEAD ORGANISER NAME | | LEAD ORGANISER CONTACT NUMBER | |

| NAME | PHONE NUMBER | ANY MEDICAL CONDITIONS THE ORGANISER SHOULD BE AWARE OF | EMERGENCY CONTACT NAME | EMERGENCY CONTACT NUMBER |
|------|-----------------|--|------------------------------|-----------------------------|
| | | | | |
| | | | | |
| | | | | |
| | | | | |
| | | | | |
| | | | | |
| | | | | |
| | | | | |
| | | | | |
| | | | | |
| | | | | |
| | | | | |
| | | | | |
| | | | | |

Data protection

We are strongly committed to an individual's right to privacy. All data gathered in this form will only be utilised during this event to ensure the safety of the participant. This data will not be shared with third parties and will not be held beyond this event.

Photography during the event.

Please note that we may take some photos during the event. These photos will be used for reporting, promoting future events, and sharing the success of the clean-up. This may include posts on social media and sending photographs to the local press. If you do not want your photograph to be taken, stored, or used in this manner please inform the event organiser.

Risk assessment template

This risk assessment acts as a *guide* to outline some of the common hazards, risks and control measures that might be encountered whilst undertaking a clean-up event. Due to changing weather and water conditions, ideally this risk assessment should be undertaken on the day of the event prior to it commencing.

Before undertaking a clean-up make sure that you have **permission of the landowner**.

All participants should be briefed by the leader on the risk assessment before the start of the clean-up

| DATE OF EVENT | LOCATION | EVENT LEADER |
|---------------|----------|--------------|
| | | |

| HAZARD | | RISK | SUGGESTED CONTROL MEASURES | ADDITIONAL MEASURES |
|----------------------------------|----------------------------------|---|---|---------------------|
| Environment Conditions | Weather condition - Cold | Hypothermia | Tell participants to wear appropriate clothing and bring extra layers Review the conditions on the day and be aware of deteriorating conditions | |
| | Weather condition - Hot | Dehydration, sunburn | Provide sun cream and ask participants to bring water | |
| | Weather condition - Rain | Slippery surface; slips trips and falls | Ask participants to wear waterproofs and appropriate footwear with good grip | |
| | Slippery uneven or steep terrain | Slips, trips and falls | Ask participants to wear appropriate footwear with good grip | |
| Tool Handling and Litter Picking | Use of tools: litter pickers | Collision with other users: eye injury | Be aware of other volunteers around the area Work slowly, minimising splashing Keep the end of the tool away from eyes When moving with the tool, keep it pointed at ground height. Leave the tool in a visible, safe location. | |
| | | Tools causing trip hazard | Leave the tool in a visible, safe location that will not cause a trip hazard | |
| | | Balance – risk of falling reaching for hard to reach litter | Do not overreach for litter | |

| HAZARD | | RISK | SUGGESTED CONTROL MEASURES | ADDITIONAL MEASURES |
|---|--|--|--|---------------------|
| Tool Handling and Litter Picking | Heavy bags | | <ul style="list-style-type: none"> Participants are warned not to overfill sacks with rubbish. Participants are informed to carry and move bags with good form | |
| | Sharp objects or hazardous litter (broken glass, metal, cans, vapes, lithium batteries) | Cuts, punctures, wounds | <ul style="list-style-type: none"> Protective gloves must be worn whilst collecting litter Instruct participants not to handle any visible needles, to note their location and report them to the local authority. Inform participants to use litter pickers wherever possible to pick up litter Inform participants not to kneel on the ground to avoid cuts or scrapes to the knees. Inform participants of the specific container for sharp items that can be safely removed. Disposable vapes and lithium batteries should not be put into landfill, but taken to recycling centres | |
| Contact with the water | Water borne diseases and pollution | Becoming sick or unwell from contact with the water e.g. Weils disease | <ul style="list-style-type: none"> Protective gloves must be worn whilst collecting litter Use litter pickers to handle litter wherever possible Carry anti-bacterial hand sanitiser and ensure hands are washed before eating Keep hands away from mouth and eyes whilst litter picking Advise participants to cover any cuts and grazes before they start Wash hands thoroughly after the clean up Advise of symptoms to be aware of for Weils disease including but not limited to: fever, chills, headaches, nausea and vomiting. Avoid outlets e.g. storm water overflows | |
| | Entering the water | Drowning | <ul style="list-style-type: none"> Where possible undertake the litter picking from the bank. Advice a participant if they are entering the water, to check the depth for silt prior to entry. Inform the participant to inform someone if they plan on entering the water and to only do so in the presence of another individual | |
| Other user | Conflict | Other water users | <ul style="list-style-type: none"> Brief the participants to be aware of other water users that might be passing during the event. Where possible, step aside to let them pass If confrontation develops remain calm and summon help as quickly as possible | |
| Invasive species | Invasive species | Unintentional transfer of invasive species between water bodies | <ul style="list-style-type: none"> Brief participants on the risk of spreading invasive non-native species to/and from other water courses. Advise participants to follow Check Clean Dry measures before and after the litter pick | |
| Other hazards not covered above | | | | |
| | | | | |
| | | | | |

Press release

Date: [insert]

Press release: For immediate release

[Insert name of angling club] removes [insert number] of litter from our waterways.

A team of [insert] angling members and volunteers spent [e.g. Saturday morning/ four hours] along the [insert river/ beach/ waterway] picking up litter to help to protect native wildlife and environment from harm.

Over [insert number of bags] of litter were collected by anglers during the event, including the usual suspects such as plastic water bottles, cans and fast food packaging, along with some other more unusual items such as [insert item].

Litter pollution presents a major threat to our waterways. Plastic does not biodegrade, instead breaking down into smaller pieces that remain in the environment. Fish and other aquatic animals may mistake these small plastic particles for food, eat it and then plastic enters our food chain. For other forms of litter pollution, animals can easily become entangled or injure themselves, sadly resulting in death in some cases. This litter is often discarded or left on the water bank, or blown in from nearby parks or streets. Litter picks such as these occur are being undertaken by anglers on a regular basis across the country as part of the Angling Trust's Anglers Against Litter campaign to help tackle this environmental issue and protect the environment.

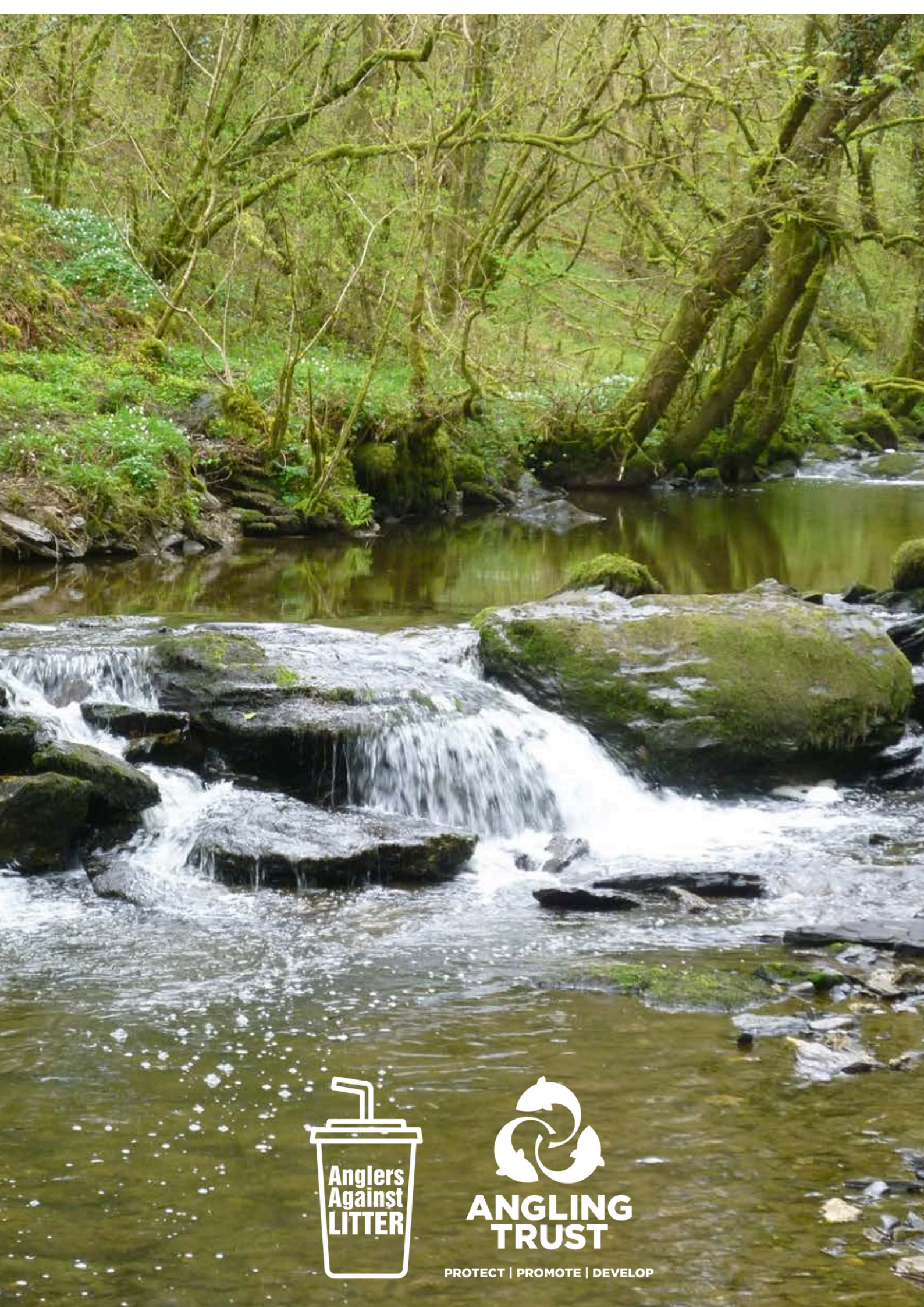
[Name, role] from [angling club] who [organised/ took part in] the clean-up said "[insert quote here]".

ENDS

About the Angling Club [optional extra]

Founded in [insert], [insert name of angling club] is based in [location]. It is primarily a [insert] club, and encourages individuals interested in giving angling a go, whatever their age or experience to get in touch.

[insert club website and social media]



**ANGLING
TRUST**

PROTECT | PROMOTE | DEVELOP